

# Value Based Care

Kristen Wyrick, MD

## Our commitment to care



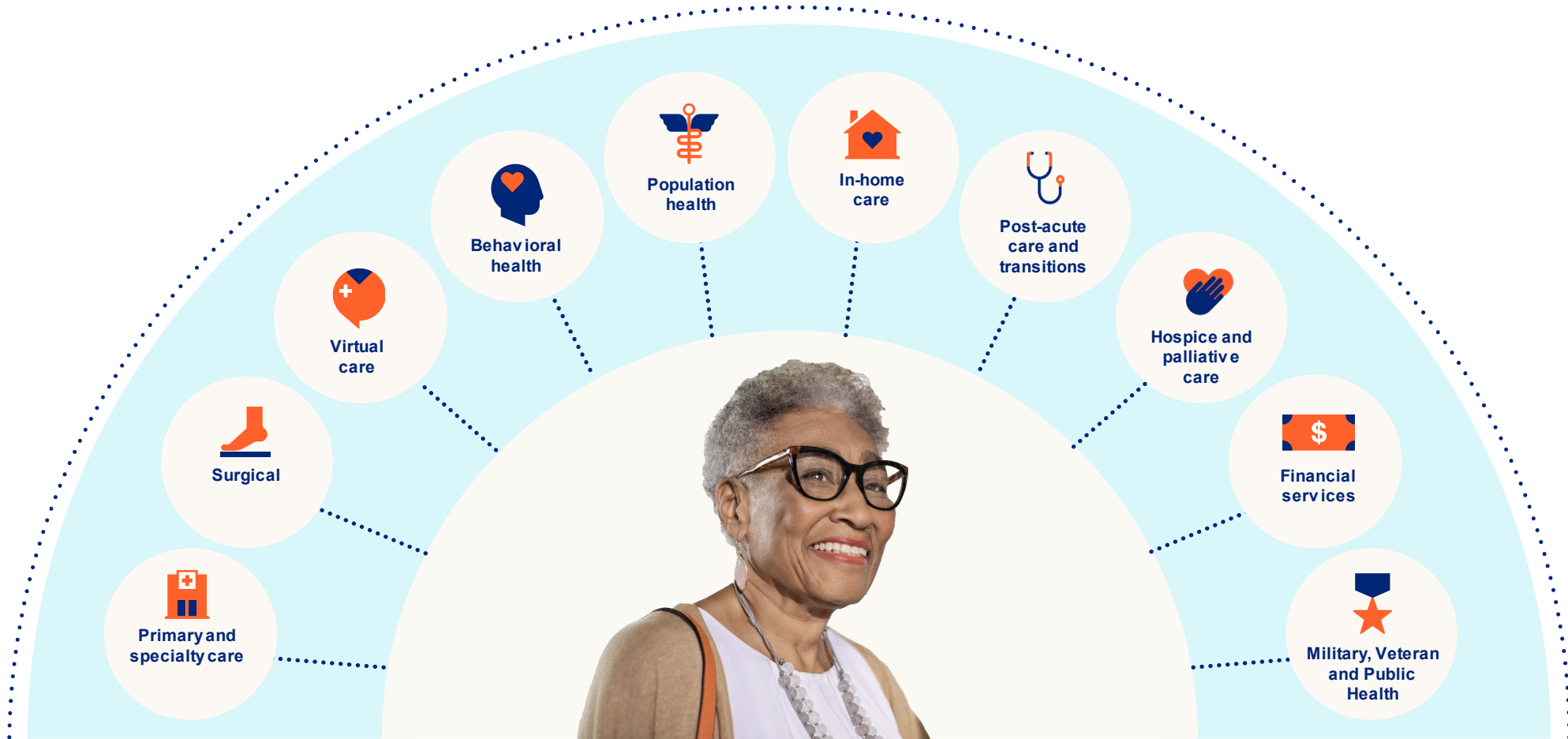
“

*“Value-based care is good for patients. It focuses on patient wellness and preventing illness with early intervention of care for the patient.*

*We work with specialists and other members of the care team including nurses, pharmacists, and social support professionals to create a care plan focused on the patient’s specific health needs and wellness goals.”*

*– Kristen Wyrick, MD*

---



## How we support your clients

## Discover the Optum difference

Our goal is to help your clients live a healthy, active life. We'll make sure they get the care they need, when they need it, at a lower cost.



## The difference that matters to your clients

**18%▼**

lower chance of  
hospital admission for  
Optum VBC patients

**11%▼**

less likely to visit an  
emergency department than  
fee-for-service patients

**35%▼**

lower estimated cost of  
care for your clients

# Case study: Optum Rx lowering costs

Delivering essential pharmacy savings for patients.



**\$1B** consumer savings  
nationally



**\$2,000** annual drug  
savings per person



**\$58** less per prescription

Source: [Optum Overview](#), 2025



## How it's touching lives

“Everybody is working together to get me better. That's my goal. Optum helps you talk with all your medical teams.”


**Mickey, age 68**  
**Medicare Advantage patient since 2020**

Mickey was fighting an uphill battle with diabetes. Then he found a doctor and care team who offered him the care he needed. Now, Mickey enjoys a fuller life and has found joy in living again.



# Case study: Optum Insight

Optum Insight is improving the flow of health data and information to create a simpler, smarter and more connected system.

Inputs	Solution	Results
<ul style="list-style-type: none"><li>• Database of real-world claims and clinical information</li><li>• Team of clinicians dedicated to studying medical data and trends</li></ul>	<ul style="list-style-type: none"><li>• Design tools to quickly identify at-risk patients</li><li>• Embed insights into clinical protocols to ensure clinical teams deliver the highest standard of care</li><li>• Use insights to guide development of wrap around services, investment in new medical advancements, and design of complex care programs to eliminate gaps in care</li></ul>	<div><div><div>25M</div><div>early interventions annually</div></div></div>

Source: [Optum Health Overview](#), pg. 4, 2025

# Optum

Optum is a registered trademark of Optum, Inc. in the U.S. and other jurisdictions. All other brand or product names are the property of their respective owners. Because we are continuously improving our products and services, Optum reserves the right to change specifications without prior notice. Optum is an equal opportunity employer.

© 2025 Optum, Inc. All rights reserved.